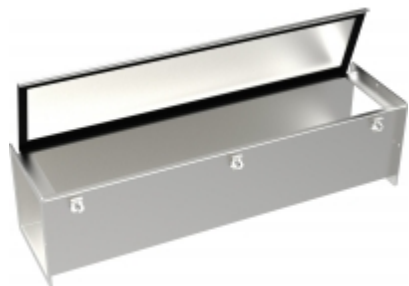




Quality Products. Service Excellence.

Type 4X Pull Through Wireway *1487SS Series*

Wireway & Accessories



Application

- Designed to enclose and protect electrical wiring from dirt, dust, oil and water.
- Ideal for connecting machines to control panels or power sources.

Standards

- UL 870 Type 1 (unless marked¹)
- CSA Type 1 (unless marked¹)
- Complies with
 - NEMA Type 4, 4X and 12
 - IEC 60529, IP66

Construction

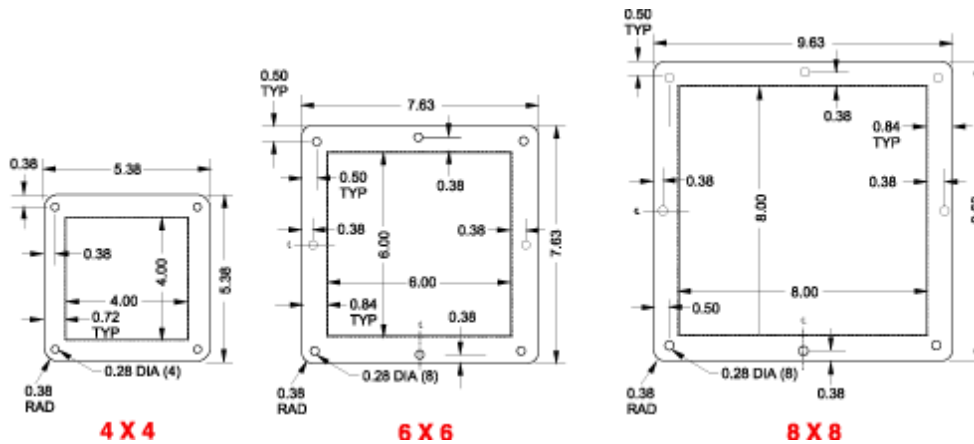
- Bodies and covers are formed from 14 gauge 304 stainless steel with 10 gauge flanges.
- Smooth continuously welded seams.
- Interior surfaces are smooth to prevent wire damage during installation.
- Butt hinged covers are secured with easily operated screw clamps.
- Oil resistant gaskets are permanently secured.
- Solid oil resistant gaskets are used between flanges when sections and fittings are bolted together.
- One gasket kit, complete with hardware is provided with each straight section or fitting.

Finish

- Sections and fittings are natural stainless steel with a smooth brushed finish.

Accessories

- Nipple
- Flexible Fitting
- 90 degree Elbow
- Tee Fitting
- Drop Hanger
- Cover Plate
- Reducers (Edge Hole)
- Swivel Nipple
- Adjustable Fitting
- 45 degree Elbow
- Box Connector
- Bracket Hanger
- Reducers (Center Hole)



Description	4 x 4 Part No.	6 x 6 Part No.	8 x 8 Part No.
12" Section	1487C12SS	1487D12SS	1487E12SS
24" Section	1487C24SS	1487D24SS	1487E24SS
36" Section	1487C36SS	1487D36SS	1487E36SS
48" Section	1487C48SS	1487D48SS	1487E48SS
60" Section	1487C60SS	1487D60SS	1487E60SS
120" Section	1487C120SS	1487D120SS	1487E120SS
6" Nipple	1487CM6SS	1487DM6SS	1487EM6SS
Standard Swivel Nipple	1487CV2SS	1487DV2SS	1487EV2SS
Flexible Fitting	1487CFFSS ¹	1487DFFSS ¹	1487EFFSS ¹
Adjustable Fitting	1487CXSS ¹	1487DXSS ¹	1487EXSS ¹
90° Elbow	1487C9PSS	1487D9PSS	1487E9PSS
45° Elbow	1487C4PSS	1487D4PSS	1487E4PSS
Tee Fitting	1487CTSS	1487DTSS	1487ETSS
Center Hole Reducers			
Reducer - 6 x 6 to 4 x 4	-	1487DRCSS ²	-
Reducer - 8 x 8 to 4 x 4	-	-	1487ERCCSS ²
Reducer - 8 x 8 to 6 x 6	-	-	1487ERCDSS ²
Edge Hole Reducers			
Reducer 6 x 6 to 4 x 4	-	1487DRESS ²	-
Reducer 8 x 8 to 4 x 4	-	-	1487ERECSS ²
Reducer 8 x 8 to 6 x 6	-	-	1487EREDSS ²
Box Connector	1487CKSS ¹	1487DKSS ¹	1487EKSS ¹
Drop Hanger	1487CL1SS ¹	1487DL1SS ¹	1487EL1SS ¹
Bracket Hanger	1487CL2SS ¹	1487DL2SS ¹	1487EL2SS ¹
Cover Plate	1487CHSS ²	1487DHSS ²	1487EHSS ²
Gasket & Screws	1487CSSS ¹	1487DSSS ¹	1487ESSS ¹

¹ Does not meet CSA or UL requirements

² Maintains ratings on CSA and UL approved wireway

Data subject to change without notice