



Quality Products. Service Excellence.

Type 12 Mild Steel Pushbutton Enclosures *1435 Series*



Application

- Designed to accept standard heavy duty oil tight pushbuttons, switches and pilot lights.
- Provides protection from dirt, dust, oil and water.

Standards

- UL 508A Type 12 and 13
- CSA Type 12 and 13
- **Complies with**
 - NEMA Type 12 and 13
 - IEC 60529, IP54
- Appropriate components are required to maintain these standards.

Construction

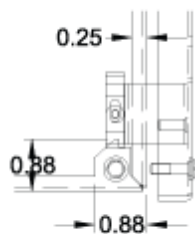
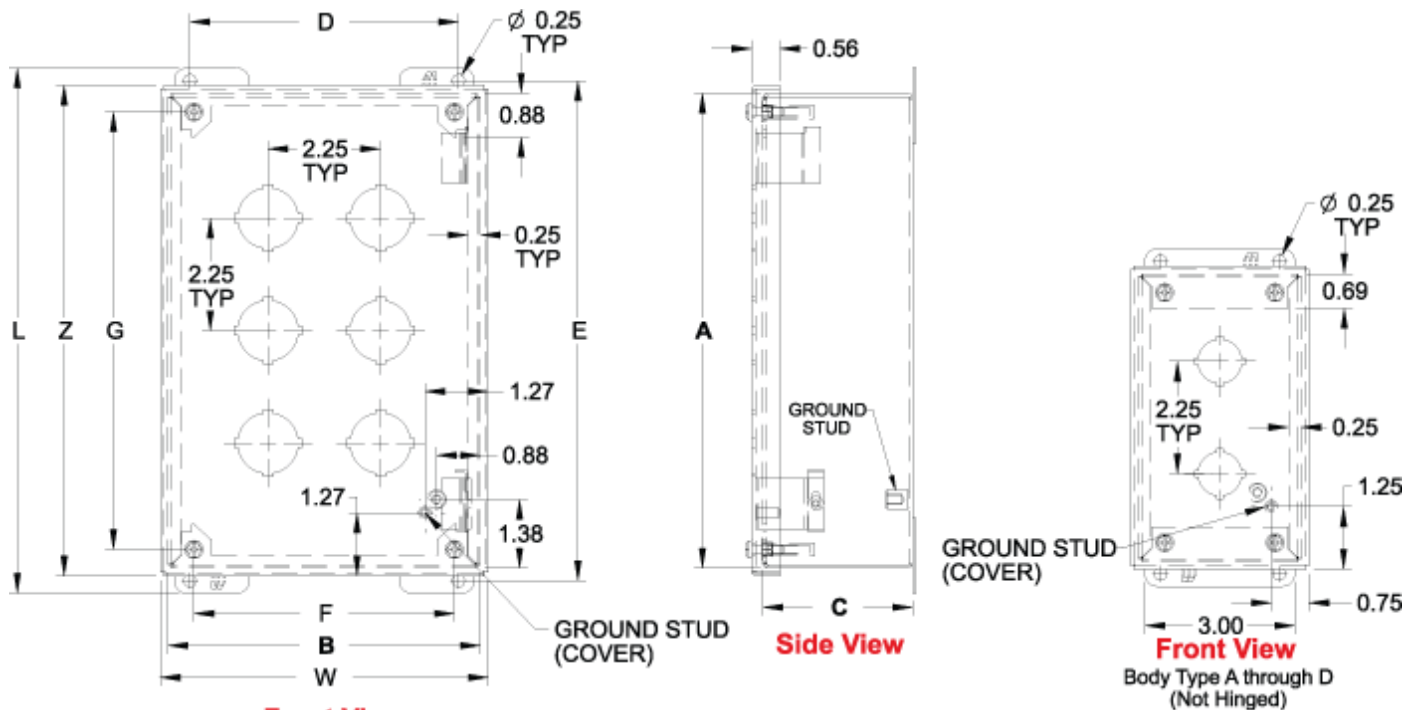
- Formed 14 gauge steel except
- A and B which are 16 gauge.
- Smooth continuously welded seams.
- Welded brackets provide for enclosure mounting.
- Captive cover screws thread into sealed wells.
- Larger enclosures provide internally hinged removable covers, designed to hold the cover open during wiring (see table).
- Oil resistant gasket and adhesive.
- A bonding stud is provided on the door and a grounding stud is provided on the enclosure.

Finish

- Cover and enclosure are phosphatized and finished in ANSI 61 gray powder coating.

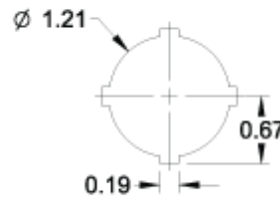
Accessories

- Hole Plugs
- Ground Wire Kits
- Pedestal and Base

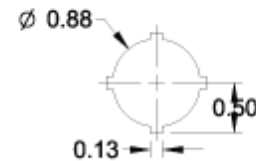


Hinge Detail

Retractable pin allows door to be mounted on left or right side



30.5mm Detail
(1435 Series)



22.5mm Detail
(1435M Series)



1



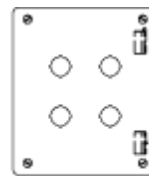
2



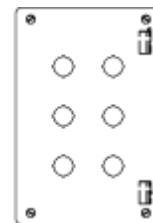
3



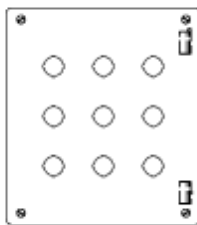
4



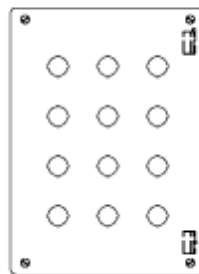
4



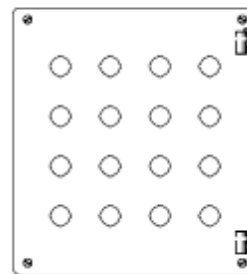
6



9



12



16

30.5mm	Part No.	22.5mm	No. of Holes	Overall Dimensions									
				A	B	C	D	E	F	G	L	W	Z
1435A ¹	1435MA ¹		1	3.50	3.25	2.75	2.38	4.00	2.21	2.75	4.50	3.56	3.81
1435B ¹	1435MB ¹		2	5.75	3.25	2.75	2.38	6.25	2.21	5.00	6.75	3.56	6.06

30.5mm	Part No.		No. of Holes	Overall Dimensions							L	W	Z
	22.5mm			A	B	C	D	E	F	G			
1435C ¹	1435MC ¹		3	8.00	3.25	2.75	2.38	8.50	2.21	7.25	9.00	3.56	8.31
1435D ¹	1435MD ¹		4	10.25	3.25	2.75	2.38	10.75	2.21	9.50	11.25	3.56	10.56
1435F	1435MF		4	7.25	6.25	3.00	5.38	7.75	5.21	6.50	8.25	6.56	7.56
1435H	1435MH		6	9.50	6.25	3.00	5.38	10.00	5.21	8.75	10.50	6.56	9.81
1435K	1435MK		9	9.50	8.50	3.00	7.63	10.00	7.46	8.75	10.50	8.81	9.81
1435O	1435MO		12	11.75	8.50	3.00	7.63	12.25	7.46	11.00	12.75	8.81	12.06
1435S	1435MS		16	11.75	10.75	3.00	9.88	12.25	9.71	11.00	12.75	11.06	12.06

¹ Not hinged

Data subject to change without notice

© 2018. Hammond Manufacturing Ltd. All rights reserved.