

Wire and terminal markers – Cable marker sleeves KBH-S

Cable marker sleeve KBH-S

KBH-S cable marker sleeves provide a safe, quick and simple solution for marking a wire. The **KBH-S** cable marker sleeves can be printed on using the **EMS** plotter system.

Perfect for use with wire cross-sections of 70 mm² and larger. They can be quickly attached using **KH holders** and cable ties or just with cable ties for stamped ferrules.

- They are available in 21, 25, 36, 40, 57 and 84 mm lengths.
- Easy to read with high-contrast typeface.
- Torsion resistant and captive.

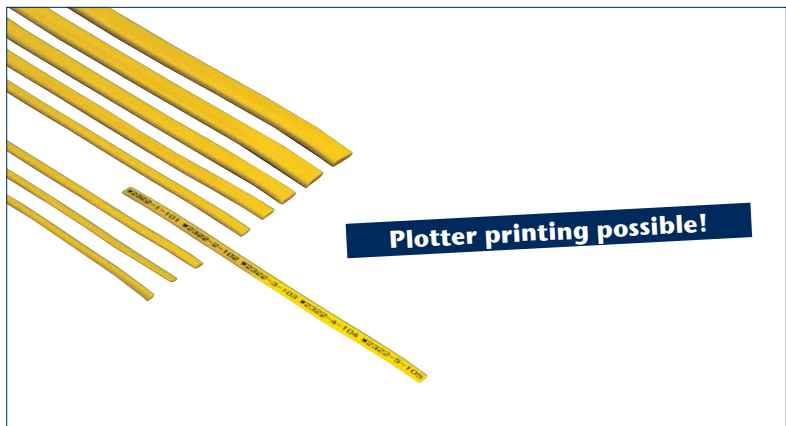
Resistant to environmental influences.
Material: Soft PVC, no cadmium or silicone



KBH-S 21 – Strip

KBH-S 36 – Strip

KBH-S 57 – Strip



Type	Qty.	Qty.	Qty.
Type/colour			
Cat. no.	KBH-S 21 blank YE strip 2624.0	KBH-S 36 blank YE strip 2532.0	KBH-S 57 blank YE strip 2625.0
Type/colour			
Cat. no.	KBH-S 21 blank WH strip 2525.0	KBH-S 36 blank WH strip 2533.0	KBH-S 57 blank WH strip 2626.0

Colours available	⑧ ⑦	⑧ ⑦	⑧ ⑦
-------------------	-----	-----	-----

Characteristics

Dimensions			
Length, mm	21	36	57
Number of ferrules per strip	9	5	3
Number of strips per pack	50	50	50

Material

Material	Soft PVC, no cadmium or silicone	Soft PVC, no cadmium or silicone	Soft PVC, no cadmium or silicone
Temperature range	-30°C to +60°C	-30°C to +60°C	-30°C to +60°C
Flamm. class acc. to UL 94	V0	V0	V0
Resistance	Oils, benzene, gamma and UV radiation	Oils, benzene, gamma and UV radiation	Oils, benzene, gamma and UV radiation

Inscription

Plotter	EMS	EMS	EMS
Plotter inlay	CCI-15	CCI-15	CCI-15
Marker pen	BS-1	BS-1	BS-1
Number of characters rows, font size 16, plotter pen 0.25: horizontal	12 3	21 3	32 3
Number of characters rows, font size 16, plotter pen 0.25: vertical	5 6	5 6	5 6

Application

Cross-section, mm ²	>70	>70	>70
Outer diameter of insulation, mm	≥16	≥16	≥16

Accessories

	Page	Qty.	Page	Qty.	Page	Qty.
Holder KH						
Cat. no.	KH 70 BK 2654.0	390	100	KH 70 BK 2654.0	390	100
Holder KH						
Cat. no.	KH 110 BK 2655.0	390	100	KH 110 BK 2655.0	390	100
KB cable ties						
Cat. no.	KB 140 BK 2672.0	390	1000	KB 140 BK 2672.0	390	1000

Holder KH



Additional accessories

More accessories starting on page 264.

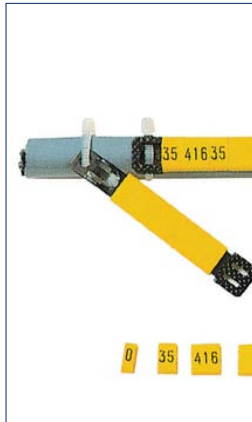
Wire and cable markers – Cable marker sleeves KBH-S

Cable marker sleeve KBH-S

KBH-S cable marker sleeves provide a safe, quick and simple solution for marking wires. Perfect for use with wire cross-sections of 70 mm² and larger. Quick attachment with **KH holders** and cable ties.

- Unlimited combination possibilities.
- Easy to read with high-contrast type-face.
- Torsion resistant and captive.
- Resistant to environmental influences.

Material: Soft PVC, with no cadmium or silicone.
Halogen-free markers (KBHZ-S) are available on request.



KBH-S4 Bag



KBH-S4 Roll



Type		Qty.
Type/colour	KBH-S4 blank YE	
Cat. no.	2691.0104	100
Type/colour	KBH-S4 blank YE	
Cat. no.	2671.0104	500
Colours available	8	
Characteristics		
Dimensions		
Length, mm	4	
Material		
Material	Soft PVC, cadmium-free and silicone-free	
Temperature range	Dimensionally stable between -30 °C and +60 °C	
Flamm. class acc. to UL 94	VO	
Resistance	Oils, benzene, gamma and UV radiation	
Inscription		
Printing process	Hot stamped	
Marker pen	BS-1	
Application		
Cross-section, mm ²	>70	
Outer diameter of insulation, mm	>16	
Accessories		Qty.
Holder KH	KH 70 BK	
Cat. no.	2654.0	100
Holder KH	KH 110 BK	
Cat. no.	2655.0	100
KB cable ties	KB 140 BK	
Cat. no.	2672.0	1000

KBH-S4 yellow Inscription	Cat. no. Bag à 100	KBH-S4 yellow Inscription	Cat. no. Bag à 100
0	2690.0000	+	2690.0419
1	2690.0001	-	2690.0420
2	2690.0002	/	2690.0402
3	2690.0003	.	2690.0403
4	2690.0004	:	2690.0404
5	2690.0005	=	2690.0405
6	2690.0006	±	2690.0406
7	2690.0007	⊕	2690.0407
8	2690.0008	~	2690.0408
9	2690.0009	+* ¹	2690.0400
		* ²	2690.0401
A	2690.0200	a	2690.0300
B	2690.0201	b	2690.0301
C	2690.0202	c	2690.0302
D	2690.0203	d	2690.0303
E	2690.0204	e	2690.0304
F	2690.0205	f	2690.0305
G	2690.0206	g	2690.0306
H	2690.0207	h	2690.0307
I	2690.0208	i	2690.0308
J	2690.0209	j	2690.0309
K	2690.0210	k	2690.0310
L	2690.0211	l	2690.0311
M	2690.0212	m	2690.0312
N	2690.0213	n	2690.0313
O	2690.0214	o	2690.0314
P	2690.0215	p	2690.0315
Q	2690.0216	q	2690.0316
R	2690.0217	r	2690.0317
S	2690.0218	s	2690.0318
T	2690.0219	t	2690.0319
U	2690.0220	u	2690.0320
V	2690.0221	v	2690.0321
W	2690.0222	w	2690.0322
X	2690.0223	x	2690.0323
Y	2690.0224	y	2690.0324
Z	2690.0225	z	2690.0325

KBH-S4 yellow Inscription	Cat. no. Roll à 500	KBH-S4 yellow Inscription	Cat. no. Roll à 500
0	2666.0000	+	2666.0419
1	2666.0001	-	2666.0420
2	2666.0002	/	2666.0402
3	2666.0003	.	2666.0403
4	2666.0004	:	2666.0404
5	2666.0005	=	2666.0405
6	2666.0006	±	2666.0406
7	2666.0007	⊕	2666.0407
8	2666.0008	~	2666.0408
9	2666.0009	+* ¹	2666.0400
		* ²	2666.0401
A	2666.0200	a	2666.0300
B	2666.0201	b	2666.0301
C	2666.0202	c	2666.0302
D	2666.0203	d	2666.0303
E	2666.0204	e	2666.0304
F	2666.0205	f	2666.0305
G	2666.0206	g	2666.0306
H	2666.0207	h	2666.0307
I	2666.0208	i	2666.0308
J	2666.0209	j	2666.0309
K	2666.0210	k	2666.0310
L	2666.0211	l	2666.0311
M	2666.0212	m	2666.0312
N	2666.0213	n	2666.0313
O	2666.0214	o	2666.0314
P	2666.0215	p	2666.0315
Q	2666.0216	q	2666.0316
R	2666.0217	r	2666.0317
S	2666.0218	s	2666.0318
T	2666.0219	t	2666.0319
U	2666.0220	u	2666.0320
V	2666.0221	v	2666.0321
W	2666.0222	w	2666.0322
X	2666.0223	x	2666.0323
Y	2666.0224	y	2666.0324
Z	2666.0225	z	2666.0325

KBH-S4 Colour of ferrule	Cat. no. Bag à 100	KBH-S4 Ferrule colour Inscription	Cat. no. Bag à 100
black	2691.0100	black/0	2527.0000
brown	2691.0101	brown/1	2527.0001
red	2691.0102	red/2	2527.0002
orange	2691.0103	orange/3	2527.0003
yellow	2691.0104	yellow/4	2527.0004
green	2691.0105	green/5	2527.0005
blue	2691.0106	blue/6	2527.0006
violet	2691.0107	magenta/7	2527.0007
grey	2691.0108	grey/8	2527.0008
white	2691.0109	white/9	2527.0009

KBH-S4 Colour of ferrule	Cat. no. Roll à 500	KBH-S4 Ferrule colour Inscription	Cat. no. Roll à 100
black	2671.0100		
brown	2671.0101		
red	2671.0102		
orange	2671.0103		
yellow	2671.0104		
green	2671.0105		
blue	2671.0106		
violet	2671.0107		
grey	2671.0108		
white	2671.0109		

Additional accessories

More accessories starting on page 264.

*1: red ferrules
*2: blue ferrules

Wire and cable markers – Stainless steel marking system MPS

Stainless steel markers MPS

The **MPS** marking system provides a high-quality method for marking cables, wires, pipes and components that is quick, safe and simple.

Single and multi-character marking – with high-quality embossing

Single-character marker: 0-9, A-Z, Ä; Ü; Ö, special characters and symbols

- Very good resistance in saline and damp environments
- Good corrosion resistance against acids
- First-class quality controlled

Material: Acid-resistant, stainless steel

MPS



MPS H



Type	Qty.	MPS Inscription	Cat. no.	Qty.
Type/colour Cat. no.		MPS blank	2653.0229	50
Type/colour Cat. no.		MPS Assortment box*1	2686.0	1
Type/colour Cat. no.		MPS assortment box*2	2687.0	1
Type/colour Cat. no.				
Type/colour Cat. no.				
Type/colour Cat. no.				
Characteristics				
Dimensions				
Length x width, mm		5,5 x 10,9		
Material				
Material		Acid-resistant stainless steel, in compliance with SIS 2347 SIS 2348, corresponding to AISI 316TI 316 L and DIN 17440		
Temperature range		-80°C to +500°C		
Resistance		Excellent resistance against heat, cold, corrosion, acids, chemical and fire		
Inscription				
System		Embossing		
Application				
Max. number of cable ties per holder		2		
Max. cable tie width, mm		4.6		
Accessories				
Holder MPS H Cat. no.		MPS H 47 3430.0	393	50
Holder MPS H Cat. no.		MPS H 65 3431.0	393	50
Holder MPS H Cat. no.		MPS H 87 3432.0	393	50
Holder MPS H Cat. no.		MPS H 109 3433.0	393	50
Holder MPS H Cat. no.		MPS H 128 3434.0	393	50
Cable tie CTS Cat. no.		CTS 4,6/127 3436.0	393	100
Cable tie CTS Cat. no.		CTS 4,6/150 3437.0	393	100
Cable tie CTS Cat. no.		CTS 4,6/200 3438.0	393	100
Cable tie CTS Cat. no.		CTS 4,6/360 3439.0	393	100
Cable tie tool Cat. no.		MPS Tool M 3826.0	425	1
Additional accessories				

MPS Inscription	Cat. no.	Qty.
0	2653.0000	50
1	2653.0001	50
2	2653.0002	50
3	2653.0003	50
4	2653.0004	50
5	2653.0005	50
6	2653.0006	50
7	2653.0007	50
8	2653.0008	50
9	2653.0009	50
A	2653.0200	50
B	2653.0201	50
C	2653.0202	50
D	2653.0203	50
E	2653.0204	50
F	2653.0205	50
G	2653.0206	50
H	2653.0207	50
I	2653.0208	50
J	2653.0209	50
K	2653.0210	50
L	2653.0211	50
M	2653.0212	50
N	2653.0213	50
O	2653.0214	50
P	2653.0215	50
Q	2653.0216	50
R	2653.0217	50
S	2653.0218	50
T	2653.0219	50
U	2653.0220	50
V	2653.0221	50
W	2653.0222	50
X	2653.0223	50
Y	2653.0224	50
Z	2653.0225	50
Ä	2653.0226	50
Ö	2653.0227	50
Ü	2653.0228	50
)	2653.0401	50
/	2653.0402	50
.	2653.0403	50
:	2653.0404	50
=	2653.0405	50
±	2653.0406	50
⊕	2653.0407	50
~	2653.0408	50
,	2653.0409	50
(2653.0410	50
+	2653.0419	50
-	2653.0420	50

*1 Numbers and symbols
30 pcs. each: 0-9; blank;
symbols

*2 Characters A through Z
30 pcs. per: A-Z; Ä; Ö; Ü;
blank